

## Prepress Workflow



# :Arkitex Director

## Intelligent Workflow Management and Automation.

Managing a complex workflow requires a great deal of experience and know how. As the pioneer and market leader in workflow management and automation Agfa brings you both. :Arkitex Director automates complex tasks with ease. At the same time it gives you complete control over your production workflow. :Arkitex Director channels front end data and directs processing for film or plate output. It tracks and monitors every task from front end through to press so you can manually intervene if needed. :Arkitex Director is a key building block of the :Arkitex workflow system.

## Workflow Management, Tracking and Control

:Arkitex Director lets you manage the workflow to assure accurate and timely output. It handles all output-related processing tasks including load balancing to any number of output devices, ensuring the proper number of plates are imaged, and prioritising output based on time and day. :Arkitex Director's intelligent tracking system provides access to work status and identifies potential problems to prevent time-consuming bottlenecks. Authorized users, throughout the workflow, have the ability to fully control the imaging of individual pages, as well as full editions.

## Page- and Sheet-Based Approval

:Arkitex Director lets you put both a sheet and/or page on hold while authorised users view a softproof for final approval before imaging. It lets them view the page or sheet image from either the Tracking or the SoftProof display. It then logs the approval in the database.

## Publication Builder

The Publication Builder feature makes planning even the most complex publication easy. It includes a visual page-sharing interface for easy sharing among editions and zones. It lets you define multiple-level hierarchies to include multiple editions/zones in a single plan file, define page variations and configure page sharing across multiple editions/zones in a single publication.

## Ensure Output Quality

The system ensures output quality before processing. A native preview of PDF pages and sheets allows late RIPPING of plates with imager calibration.

# :Arkitex Director



## **Automatic Output Priority Control**

With :Director you can be sure that the correct plates get imaged at the right time through automatic output priority control by day and time.

## **Imaging Control**

Gain control over imagers with either manual or time-based start and stopping of imaging. :Arkitex Director also lets you manage CtP devices ensuring the proper number of plates are imaged, based on the specific configuration.

## **Flexible Format Options**

True-data format flexibility lets you choose the data format based on preferences and to accommodate job requirements. :Arkitex Director provides native support for a variety of formats, including TIFF and PDF. Choosing TIFF enables softproofing of the actual TIFF data to be imaged, while compact PDF streamlines the workflow. You can choose different data formats for the same edition. :Arkitex Director also lets you choose Ripping options—RIP once and output as many times as needed to decrease network traffic, or RIP each time a plate copy is required to allow additional information/tracking tags.

## **MAXML™ System Integration**

Agfa developed MAXML to provide faster production and tighter system integration. It interprets and implements planning instruction. Based on the XML standard, MAXML describes the structure of an edition and the work required to produce it. It also describes the structure of a message passed from one system to another with information defining the work required, thereby providing seamless integration.

## **Page- and Plate-Status Tracking**

:Arkitex Director tracks both arrival of pages and the imaging status of plates. Page tracking allows events to enter the system before the data actually arrives allowing :Arkitex Director to provide visibility back into pagination.

Plate tracking with barcodes lets you view the status of the plates as they image and track all the way through to mounting the plates on the press.

## **Intuitive User Interface**

A flexible user interface lets you view multiple levels in the publication tree. It also allows you to configure the publication tree to display production exactly as desired. It lets you filter pages/sheets based on various status levels. It allows different users to focus on specific data simplifying their job and highlighting priority files.

## **Page version support**

:Arkitex Director lets you control which pages image by allowing you to configure pages for versioning. A visual interface lets you define shared or common pages across multiple editions and zones in a single publication. It lets you identify shared and changing pages through a simple mouse-click.

## **Media Management**

The system's media management feature ensures that the correct plate size is used. This improves imaging throughput by minimizing cassette changes.

## **Secure Server Options**

:Arkitex Director provides two backup security options in the event the main server fails. As each file is processed Active Backup automatically copies them to a backup server. It also copies the production database at timed intervals. If the primary server should fail, Active Backup will restore databases and ready the backup server for production. High Availability provides additional protection. It shares data storage with the primary server to provide an automatic fail-safe system.

## **Plate Count Control**

:Arkitex Director puts plate count control in plate making to ease page releasing. This also lets you manage CtP devices ensuring the proper number of plates are imaged, based on the specific configuration.

## **Hardcopy Proofing of Pages and Sheets**

:Arkitex Director lets you output hardcopy proofs of pages/sheets. High-resolution TIFF files provide a visual proof of how the final pages/sheets will print on press.

## **Web-Browser Convenience**

The system let's authorised users manage and track production from the plate room, the press room or anywhere using a standard Web browser.



### Local-Language Configuration

You can configure :Arkitex Director to use another language in the users Client interface, the server operating system, and for file naming.

### Page and Sheet SoftProofs

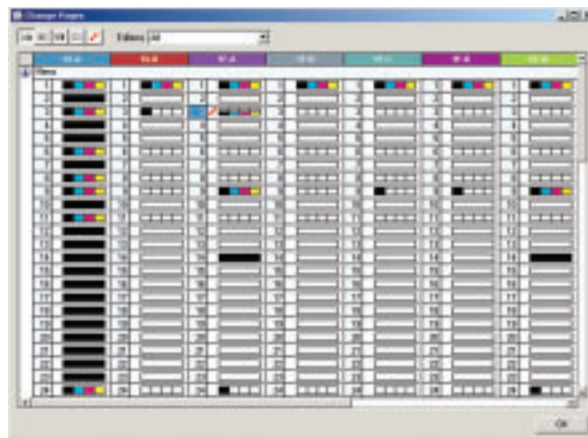
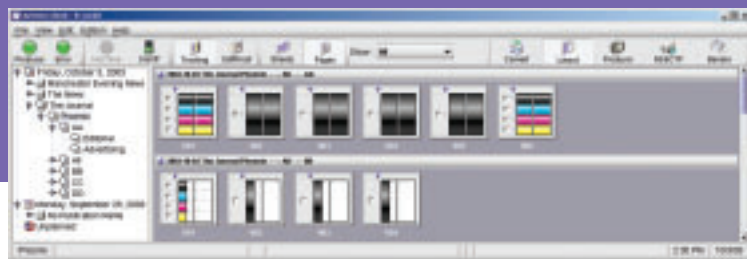
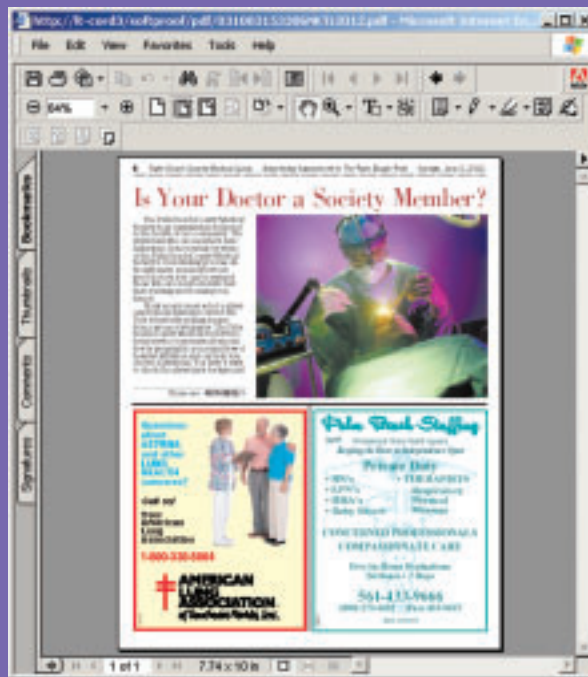
Minimise output errors by softproofing pages/sheets. You can view a colour managed proof of the pages using the same data that will be used for high-resolution output to plate. The softproofing feature allows you to send a proof to advertising and editorial so those who know what the pages are supposed to look like can provide approval.

### Purging Options

:Arkitex Director lets you purge tracking information, data files, and system messages manually or automatically. You can create rules that execute at defined times and purge based on publication date or the time an edition has been in the system.

### User Permissions

You'll get complete control over access and permissions through full user permission log-in :Arkitex Director lets you create users and groups using the standard Windows management tools. Then the :Arkitex configuration program lets you assign permissions to each user or group to all or selected publications or editions.



### Flexible File Name Recognition

:Arkitex Director's flexible file name recognition allows easy integration to pagination systems. The system combines long and short names and lets you define files with all variables.

### Administrative LogViewer

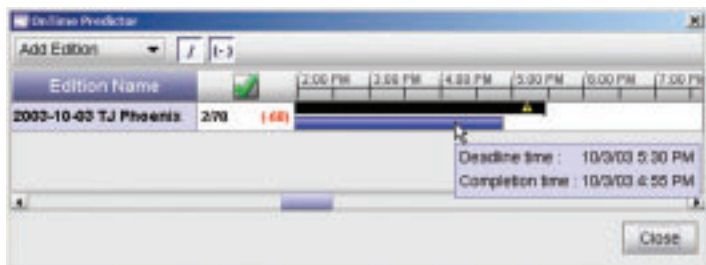
:Arkitex LogViewer lets you monitor system messages from a computer via a Web browser. It lets you view the entire central system, set alerts or use custom scripting to notify users with system messages. You can also export LogViewer data for use in writing reports using tools such as Microsoft Excel.

# :Arkitex Director

## Extending Workflow Benefits

Because :Arkitex is modular, you can extend the functionality of any component as your needs change, simply by adding another. Each :Arkitex module integrates seamlessly with the other to provide uninterrupted workflow automation.

:Arkitex Feature	:Arkitex Module
Track both text and barcodes of multiple production events with automatic priority control based on hot times	:Arkitex Director
Extend automation to the press and reduce paper and ink waste.	:AutoPlan/:AutoInk
Save time by automating the assembly of 2-up plates.  Double burning pages with optional overlap checking to highlight layout errors	:Arkitex Pair
Custom design plate layout with a visual design tool.	:Arkitex Plate Builder
Save even more time by automating the assembly of 4- and 8-up plates.  Simplify planning of complex imposed editions with automatic imposition adjustments for half-web positions.	:Arkitex Imposer (& Pair)
Enhance TIFF workflow performance with Image Agents.	:Arkitex Image Agent
Highlight production issues with standard newspaper reports	:Arkitex Report
Predict deadline breach with a system-wide warning	:Arkitex On-Time Predictor



**Argentina**,  
(Paraguay and Uruguay),  
Tel.: 5411-4958-5767  
**Australia**, Tel.: 03 9279 6300  
**Austria**, Tel.: 43-1-89112-3290  
**Belgium**, Tel.: 32-3-450-98-66  
**Belgium, Direct Export**  
Tel.: 32-3-444-7120  
**Brazil**, Tel.: 55-11-5188-6444

**Canada**, Tel.: 416-241-1110 Ext: 4053 or  
877-753-2432 toll free  
**Caribbean and Central America**,  
Tel.: +305 213 5311  
**Chile**, (Bolivia, Ecuador, Peru)  
Tel.: 56 2 360 7600  
**China, Hong Kong** Tel.: 852-2555-9421  
**Colombia**, Tel.: 571 425 2790  
**Czech Republic**, Tel.: 420-2-6610-1623

**Denmark**, Tel.: 45-4326-6766  
**Finland**, Tel.: +358 9 8878 319  
**France**, Tel.: 33-1 47 32-6905  
**Germany**, Tel.: 49-221-5717-0  
**Greece**, Tel.: 30-1-570-6500  
**Hungary**, Tel.: 361-212-1540  
**Ireland**, Tel.: 353-1-450-6733  
**Italy**, Tel.: 39-02-3074-220  
**Japan**, Tel.: 81-3-5704-3140

**Korea**, Tel.: 82-2-2262-4200  
**Luxembourg**, Tel.: 352-44-20-441  
**Malaysia**, Tel.: 603 7957 4200  
**Mexico**, Tel.: +52 55 52 767600  
**Netherlands**, Tel.: 31-70-413-1211  
**New Zealand**, Tel.: 64-9-443-5500  
**Norway**, Tel.: 47-67 06 88 00  
**Poland**, Tel.: 48-22-572-3940  
**Portugal**, Tel.: 351-21 414-6700

**Singapore**, Tel.: +65 6214 0110  
**South Africa**, Tel.: 27-11-921-5911  
**Spain**, Tel.: 34-93-476-7600  
**Sweden**, Tel.: 46-8-793-0100  
**Switzerland**, Tel.: 41-1-823-7111  
**Taiwan**, Tel.: 886-2-2516-8899  
**UK**, Tel.: 44 20 8231 4929  
**USA**, Tel.: 800-227-2780  
**Venezuela**, Tel.: 58 212 263 6344

© Copyright 2003 by Agfa-Gevaert N.V. All rights reserved. Printed in Belgium.  
AGFA and the Agfa rhombus are registered trademarks of Agfa-Gevaert AG.  
:Arkitex, :Arkitex AutoInk, :Arkitex AutoPlan, :Arkitex Imposer, :Arkitex Image Agent,  
:Arkitex Pair :Arkitex On-Time Predictor, :Arkitex Foundation, :Arkitex Director, :Arkitex  
Plate Builder and :Arkitex Report are trademarks of Agfa-Gevaert N.V., Belgium.  
All other trademarks are the property of their respective holders.  
All product specifications are subject to change without notice.  
Appearance of equipment ordered may differ from that equipment shown in photographs.

NF5UY GB 00200310

[www.agfa.com](http://www.agfa.com)

**AGFA** 

| see more | do more