

## CtP and CtF Processing Interface



# :Arkitex NewsDrive X

## Maximising CtP or CtF Throughput.

*Installing an advanced film or platesetter doesn't guarantee that you'll get maximum throughput. That's why Agfa developed :Arkitex NewsDrive X. It sends a fast, steady stream of data to your computer-to-plate and computer-to-film systems.*

*With :NewsDrive X, you'll be able to take full advantage of the fastest engine speeds, reliably. It goes beyond TIFF buffers and other solutions to provide a complete, productivity-enhancing interface for your system. :NewsDrive X represents the premise of the :Arkitex workflow automation solution—to give you trouble-free, optimal performance from editorial to press.*

### High Productivity

:Arkitex NewsDrive X optimises output speed for a variety of devices. It can drive a CtP system with an uninterrupted flow of data to ensure faster throughput. Newspapers around the world choose Agfa's CtF and CtP systems for their speed, productivity, and reliability. :Arkitex NewsDrive X lets you realise the full capability of these systems. They include : the :Polaris family of CtP systems, and the :Advantage DL 3850 CtP system and a variety of non-Agfa output devices.

### Systems Integration

:Arkitex NewsDrive X uses MAXML to integrate seamlessly within the full :Arkitex suite of workflow automation products. Based on the XML standard, MAXML describes the structure of an edition and the work required to produce it. It also describes the structure of a message passed from one system to another with information defining the work required.



### Flexible System Control

Within an :Arkitex workflow :Arkitex NewsDrive X provides full image-processing features, giving you total control of incoming pages. It lets you view an easy-to-read detailed log file to check system status. A convenient folder support system automatically searches multiple nested folders for pages. Or you can manually redirect :Arkitex NewsDrive X to another folder or another :Arkitex NewsDrive X interface if the immediate engine has problems. It lets you add or remove plate mark images. And you can output multiple plate copies.

### Ease of Use

An intuitive user interface makes the system easy to operate. :Arkitex NewsDrive X also adapts to your current naming system. And it lets you remake a plate quickly and easily. Just modify the job parameters (e.g. for positioning) and then simply resubmit the file.

**AGFA** 

| see more | do more

# :Arkitex NewsDrive X

## Closed-Loop Support

:Arkitex NewsDrive X supports Agfa's :Afirmá closed-loop CtP system. :Afirmá monitors and tracks all the variables that can affect plate making to ensure fool-proof press-ready plates.

## :Arkitex NewsDrive

Agfa's goal is to provide all our computer-to-film and computer-to-plate customers with the same level of output productivity whether or not they use the :Arkitex workflow management solution. :Arkitex NewsDrive was designed to drive Agfa output devices in a non-Agfa TIFF workflow. It provides a reliable, high-speed processing interface, ensuring a seamless match with your printing operation.

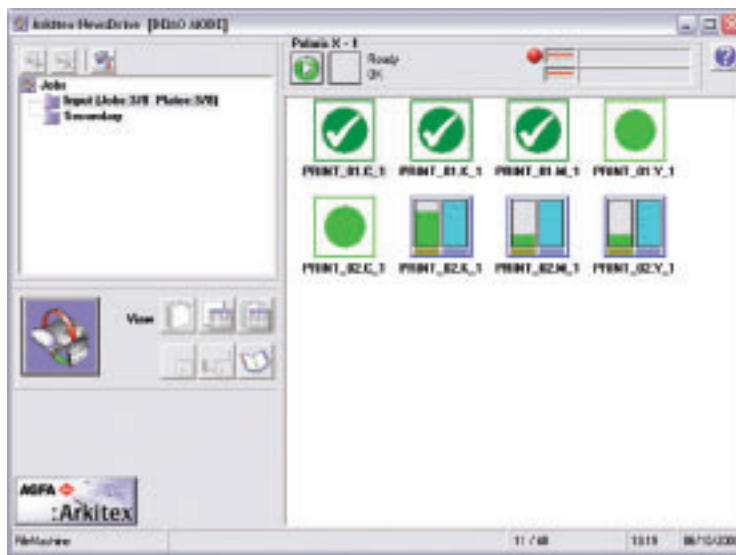
:Arkitex NewsDrive provides much of the functionality of :Arkitex NewsDriveX, including imposition support. But because it was intended for non-Agfa production systems it does not use :Arkitex's MAXML technology. It does not support scripting and permits only one input file per template.

## Power in Any Workflow or with Any Device

Both :Arkitex NewsDrive and :Arkitex NewsDrive X support all Agfa and Autologic film and plate devices as well as a number of non-Agfa devices. That means you can get all the powerful features of :Arkitex even with non-Agfa devices.

## :Arkitex Specialist Support

If you have a device :Arkitex NewsDrive X or :Arkitex NewsDrive does not support, our workflow specialists will analyse your needs and recommend an alternative :Arkitex solution. Agfa thought of everything to give you the productivity you need now with the ability to extend workflow automation well into the future.



:Arkitex NewsDrive X is available as standalone or as part of a complete :Arkitex workflow solution

Argentina, (Paraguay and Uruguay),  
Tel.: 54-11-4958-5767  
Australia, Tel.: 03 9279 6300  
Austria, Tel.: 43-1-89112-3290  
Belgium, Tel.: 32-3-450-98-66  
Belgium, Direct Export  
Tel.: 32-3-444-7120  
Brazil, Tel.: 55-11-5188-6444  
Canada, Tel.: 416-241-1110 Ext: 4053

or 877-753-2432 toll free  
Caribbean and Central America,  
Tel.: 305-2135311  
Chile, (Bolivia, Ecuador, Peru)  
Tel.: 56 2 360 7600  
China, Hong Kong Tel.: 852-2555-9421  
Colombia, Tel.: 571 425 2790  
Czech Republic, Tel.: 420-2-6610-1623  
Denmark, Tel.: 45-4326-6766

Finland, Tel.: 358-9-8878-319  
France, Tel.: 33-1 47 32-6905  
Germany, Tel.: 49-221-5717-0  
Greece, Tel.: 30-1-570-6500  
Hungary, Tel.: 361-212-1540  
Ireland, Tel.: 353-1-450-6733  
Italy, Tel.: 39-02-3074-220  
Japan, Tel.: 81-3-5704-3140  
Korea, Tel.: 82-2-2262-4200

Luxembourg, Tel.: 352-44-20-441  
Malaysia, Tel.: 603 7957 4200  
Mexico, Tel.: 52-55-52-767600  
Netherlands, Tel.: 31-70-413-1211  
New Zealand, Tel.: 64-9-443-5500  
Norway, Tel.: 47-67 06 88 00  
Poland, Tel.: 48-22-572-3940  
Portugal, Tel.: 351-21 414-6700  
Singapore, Tel.: 65-6214-0110

South Africa, Tel.: 27-11-921-5911  
Spain, Tel.: 34-93-476-7600  
Sweden, Tel.: 46-8-793-0100  
Switzerland, Tel.: 41-1-823-7111  
Taiwan, Tel.: 886-2-2516-8899  
UK, Tel.: 44 20 8231 4929  
USA, Tel.: 800-227-2780  
Venezuela, Tel.: 58 212 263 6344

© Copyright 2003 by Agfa-Gevaert N.V. All rights reserved. Printed in Belgium.  
AGFA and the Agfa rhombus are registered trademarks of Agfa-Gevaert AG.  
:Advantage, :Arkitex NewsDrive, and :Polaris are trademarks of Agfa-Gevaert N.V., Belgium.  
All other trademarks are the property of their respective holders.  
All product specifications are subject to change without notice.  
Appearance of equipment ordered may differ from that equipment shown in photographs.

NF5W3 GB 00200310

[www.agfa.com](http://www.agfa.com)

**AGFA** 

| see more | do more